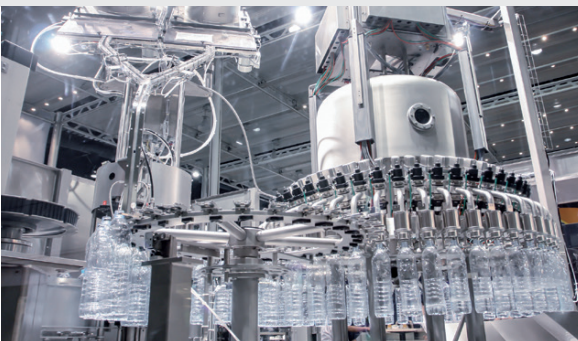
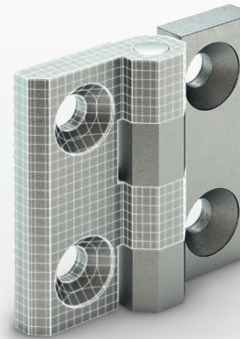


Components for packaging machines and equipment



DESIGNED
FOR ENGINEERING

TWO COMPANIES ONE WORLD OF STANDARD PARTS



ELESA+GANTER is a worldwide sales joint-venture set-up to offer the widest product range of standard machine elements for the mechanical industry. Highly reliable products ensuring perfect functionality with a unique design represents the ELESA+GANTER distinctive quality code.

DESIGNED FOR ENGINEERING

Designing and manufacturing technical solutions for the mechanical industry represent the achievement and the commitment of Elesa and Ganter. A guarantee for leading-edge benefits for the customers.

POINTS OF STRENGTH

- Technological background from the two established parent companies
- Innovation in combination with decades of experience
- Unique design
- Optimised and widest product range of standard machine elements, driven by the market
- Worldwide distribution network
- Full stock availability with fast delivery times
- Customised solutions
- Perfect service including technical assistance



DESIGNED
FOR ENGINEERING



STANDARD COMPONENTS FOR PACKAGING MACHINES AND EQUIPMENT

ELESA+GANTER, leader in the design and manufacture of components in engineering plastics and metal, presents in this leaflet components for all manoeuvring, clamping and control operations for automatic machines and automated lines for the packaging also in pharmaceutical and food industry.

EXTRACT FROM OUR WIDE PRODUCT RANGE OF STANDARD MACHINE ELEMENTS:



NEW PRODUCT LINES FOR PACKAGING MACHINES AND EQUIPMENT

HYGIENIC DESIGN



In the food industry, medical technology and the pharmaceutical industry, product safety and consumer protection are becoming increasingly important.

Due to their specific properties, standard parts in Hygienic Design can assist the production process in these sensitive areas and facilitate the manufacture of products with a long shelf life, which are free from preservatives.

VISUALLY AND METAL DETECTABLE LINES



Technopolymer suitable for contact with food (FDA CFR.21 and EU 10/2011) with AISI 304 stainless steel inserts. The specificity and uniqueness of the blue colour, naturally absent in the environment in which these components are applied, contribute to increase the levels of safety in food production processes.

VD: Visually Detectable technopolymer RAL 5005 "Signal Blue" for visual detection.

MD: Metal Detectable technopolymer (with additives for detection) in RAL 5001 "Green-Blue".



ROTARY CONTROLS

Mechanical and electronic



ELESA+GANTER rotary controls are used to set and regulate a wide variety of machine functions. High level of reliability and accuracy of the reading is made possible by great care during production and assembly of all components. The technopolymer case thanks to the ultrasonic welding (case/window) guarantees the complete sealing with protection class up to IP67 according to IEC 529.



Application of DD52R-E electronic position indicator with MBT knob.

Digital or LCD digital reading

Position indicators with direct drive movement can be directly assembled on control spindles in any position. Bushing in black-oxide steel or stainless steel with Ø 10 mm (DD50), Ø 14 mm (DD51) and Ø 20 mm (DD52R). Available also the new electronic position indicators with radio frequency transmissions (RF).



DD50



DD51



DD52R



DD52R-E



DD52-E-RF

Analogue or digital-analogue reading

Position indicators with gravity or positive drive movement, available in metal or technopolymer. They can be assembled to handwheels for coupling to the drive shaft.



VRTP-GA12



CASTORS AND WHEELS

Manual or mechanical handling



Arrange of castors and wheels mainly in rubber, technopolymer, polyurethane or Duroplast materials with metal or stainless steel brackets are available for the movement of machinery or trolleys for multiple surfaces and resistance to different loads.



RE.FF-N



RE.F4-H



RE.F2-WH



CONTROL ELEMENTS

On the spot adjustments



ELESA+GANTER presents an extensive range of knurled control knobs, indexing mechanisms and levers, adjustable slide units and bull's eye levels to make adjustments or precise alignment of machine parts and precision instruments. The range includes components in technopolymer, steel, stainless steel, aluminium with black epoxy-resin coating, to best fit the most demanded applications in the packaging sector.



GN 2282



GN 200



GN 727



GN 900



LEVELLING ELEMENTS

For many different applications



Levelling feet for the fixed positioning of machinery and equipment available in a wide variety of material combinations and designs, to fit the most demanded applications for light and heavy duty purposes. Available also for ground mounting.



LV.A-SST



GN 31



GN 21



LX-SST

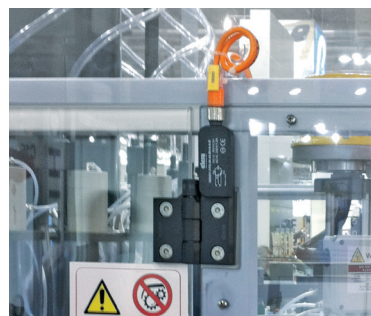


HINGES

For mounting doors and covers



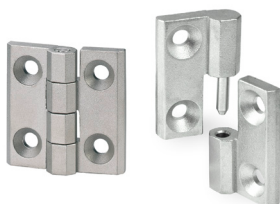
A wide range of hinges in technopolymer, SUPER-Technopolymer, aluminum, zinc die casting, steel and stainless steel with different types of shapes, dimensions, assembly and rotation angle.



Application of CFSQ hinge with built-in safety switch.



CFA, CFT



GN 237, GN 337

Hinges with safety switch

Among the many series of the range you can also find versions with built-in safety switch in SUPER-Technopolymer, zinc die casting and stainless steel.



CFSW



GN 139.1



GN 139.5



INDEXING ELEMENTS

For repetitive positioning operations



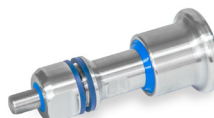
A wide range of indexing plungers, lock pins, cam action indexing plungers and spring plungers are part of the indexing elements, also known as positioning elements. Components designed to facilitate repetitive positioning operations on machines and equipment or parts undergoing machining.



GN 612



PMT.101



GN 8170



GN 113.10

STANDARD MACHINE ELEMENTS

For manoeuvring, clamping and control operations

ELESA+GANTER presents an extensive range of handwheels, clamping knobs, adjustable levers, bridge or tubular handles as well as guard safety and flush pull handles, available in technopolymer, stainless steel, steel, aluminum or zinc die casting with the greatest care to surface finishing.



VDS.

Solid handwheels with safety fold-away handles

Technopolymer
Diameters: 80 to 300 mm



GN 300.5

Adjustable Stainless Steel-Hand levers

with bushing / with threaded stud



GN 5335

Stainless Steel-Star knobs

Matte shot-blasted or highly polished
Diameters from 40 to 60 mm



Application of VDS+IRS handwheels with safety fold-away handles



Application of GN 300.5 adjustable stainless steel-hand levers



Application of GN 5335 stainless steel-star knobs



ERX.

Adjustable handles

Technopolymer lever, grey-black colour
Push button in Elecolors® colours
The ergonomic shape ensures an effective and safe grip
Dimensions: 30 to 108 mm



GN 425.3

Cabinet U-Handles

Steel or stainless steel, without thread, for welding. Steel or AISI 304 matte, shot-blasted
Length from 64 to 250 mm



ETH-AN

Tubular handles

Anodised aluminium tube; technopolymer handle shanks; side caps in Elecolors® colours. Assembly centre distance: 300 to 1000 mm



Application of ERX, adjustable handles



Application of GN 425.3 Cabinet U-Handles



Application of ETH-AN tubular handles



Find out more on [elesa-ganter.com](https://www.elesa-ganter.com)

ELESA S.p.A.
Via Pompei 29
20900 Monza (MB)
Italy
+39 039 28 111
info@elesa.com
elesa.com

OTTO GANTER GmbH & Co.KG
Triberger Straße 3
78120 Furtwangen
Germany
+49 7723 65 07 0
info@ganternorm.com
ganternorm.com



**DESIGNED
FOR ENGINEERING**