

Lobe knobs

Technopolymer, easy cleaning

MATERIAL

Glass-fibre reinforced polyamide based (PA) technopolymer, white colour similar to RAL 9002, matte finish.

STANDARD EXECUTION

AISI 303 stainless steel boss, threaded blind hole.

FEATURES AND APPLICATIONS

The exclusive five-lobe shape (ELESA original design) offers the operator's fingers a proper grip and prevents unhealthy residues from depositing thanks to its solid shape without cavities.

This knob is particularly suitable for applications on machines and equipment whose parts must be frequently cleaned by using water jets or steam.

The metal insert in AISI 303 stainless steel can be used in sectors where corrosion resistant materials are required.

Lobe knobs

Technopolymer chrome-plate

MATERIAL

Glass-fibre reinforced polyamide based (PA) technopolymer, chrome-plated, glossy finish.

STANDARD EXECUTION

Brass boss, threaded blind hole.

FEATURES AND APPLICATIONS

The exclusive five-lobe shape (ELESA original design) offers the operator's fingers a proper grip and prevents unhealthy residues from depositing thanks to its solid shape without cavities.

CHEMICAL AGENTS RESISTANCE

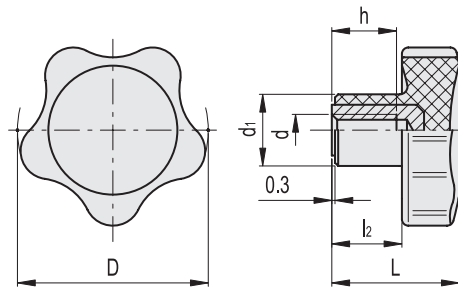
This knob is particularly suitable for applications on machines and equipment whose parts, for hygienic reasons, must be frequently cleaned also using water or steam jets. The chrome-plating makes the surface finish semi-glossy and homogeneous to facilitate cleaning operations. The chrome-plated surface is resistant to wear, scrapes and shocks. In laboratory tests carried out at ambient temperature (23°C), the chrome-plated surface revealed to be resistant to: sea water, detergents, acetone, ethyl alcohol, formic acid, chlorine solutions.



ELESA Original design



ELESA Original design



STAINLESS STEEL

Code	Description	D	d6H	L	d1	l2	h	⚖
151702	VC.692/32-SST-M6-CLEAN	32	M6	22.5	14	12.5	10	15
151712	VC.692/40-SST-M8-CLEAN	40	M8	26	15	14	13	24
151722	VC.692/50-SST-M10-CLEAN	50	M10	31	18	17	17	42
151732	VC.692/60-SST-M12-CLEAN	60	M12	36.5	21	21	20	54

Code	Description	D	d6H	L	d1	l2	h	⚖
152702	VC.692/32-CR-B-M6	32	M6	22.5	14	12.5	10	14
152712	VC.692/40-CR-B-M8	40	M8	26	15	14	13	23
152722	VC.692/50-CR-B-M10	50	M10	31	18	17	17	40
152731	VC.692/60-CR-B-M10	60	M10	36.5	21	21	20	63