

Indexing cranked handles

SPECIFICATION

Bores

- Bore **B**: without keyway
- Bore **K**: with keyway

Body

Cast iron (GGG)

- deburred and shot-blasted
- hub machined

Handle

Steel, blackened

Indexing pin

Steel, hardened



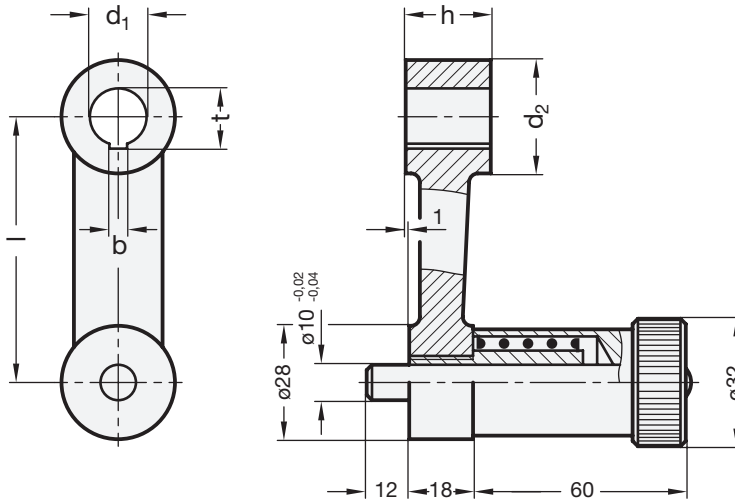
INFORMATION

Indexing cranked handles GN 558 are for positioning mechanisms. Standard machine elements for positioning of spindles:

- Indexing mechanisms GN 200 (see page 622)
- Indexing levers GN 215 (see page 634)
- Adjustable knobs GN 700 (see page 624)

TECHNICAL INFORMATION

- ISO-Fundamental Tolerances (see page A21)
- Keyway P9 DIN 6885 (see page A16)



GN 558

Description	l	d1 H7	d2	h	bp9	t	⚖
GN 558-75-B16	75	B 16	32	24	-	-	544
GN 558-75-K16	75	K 16	32	24	5	17.3	540
GN 558-90-B18	90	B 18	34	26	-	-	588
GN 558-90-K18	90	K 18	34	26	6	19.7	583
GN 558-110-B20	110	B 20	36	30	-	-	684
GN 558-110-K20	110	K 20	36	30	6	21.7	680
GN 558-135-B22	135	B 22	42	32	-	-	823
GN 558-135-K22	135	K 22	42	32	6	23.7	818
GN 558-165-B24	165	B 24	44	36	-	-	994
GN 558-165-K24	165	K 24	44	36	8	25.7	988

