

## Cabinet "U" handles

Steel / Aluminium / Stainless Steel

### SPECIFICATION

#### Version in Steel

Steel

plastic coated  
black, RAL 9005, textured finish **SW**

chrome-plated **CR**  
blackened **BT**

Location discs  
Zinc die casting, nickel plated

#### Version in Aluminium

Aluminium **AL**

plastic coated  
black, RAL 9005, textured finish **SW**  
silver, RAL 9006, textured finish **SR**  
red, RAL 3000, textured finish **RS**

Location discs  
Zinc die casting, nickel-plated

anodized, natural colour **EL**

#### Version in Stainless Steel

- AISI 303 / AISI 304 (A2) **NI**  
- matt shot-blasted **GS**  
- electropolished **EP**

Stainless Steel AISI 316L **A4**  
matte shot-blasted **GS**

Location discs  
Stainless Steel AISI 303 / AISI 316L



### INFORMATION

Cabinet "U" handles GN 425  $\varnothing 8$  and  $\varnothing 10$  are supplied with two location discs. They guarantee a perfect location even with large holes in the cabinet. The discs are loosely enclosed.

The chrome-plated design is only conditionally suitable for outdoor use. The stainless steel design version should be given preference.

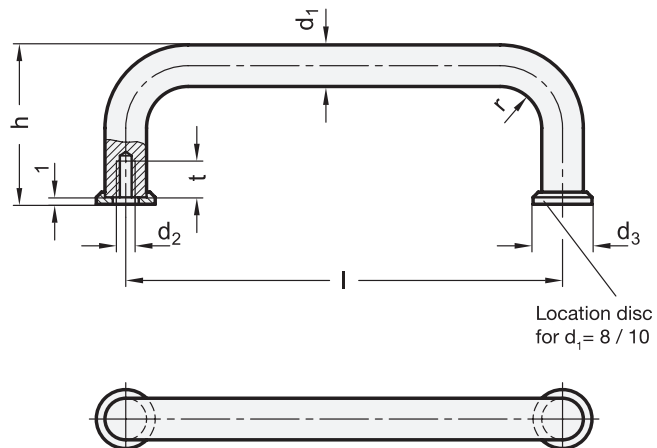
The manufacturing process (bending) allows the production of **special lengths** in relatively small quantities.

### ON REQUEST

- Stainless Steel version A4 electropolished

### TECHNICAL INFORMATION

- Load rating information (see page A35)



\* Complete with colour index of the Cabinet "U" handles (SW, CR or BT)

**SW** **CR** **BT**  
RAL9005 chrome-plated blackened

## GN 425

Description	d1	l ±0.5	d2	d3	h	r	t min.	⚖
GN 425-8-55-*	8	55**	M 4	12	35	10	8	40
GN 425-8-64-*	8	64	M 4	12	35	10	8	43
GN 425-8-88-*	8	88**	M 4	12	35	10	8	50
GN 425-8-96-*	8	96	M 4	12	35	10	8	56
GN 425-8-100-*	8	100	M 4	12	35	10	8	58
GN 425-8-120-*	8	120**	M 4	12	35	10	8	66
GN 425-8-128-*	8	128	M 4	12	35	10	8	69
GN 425-10-88-*	10	88**	M 5	15	43	12	12	88
GN 425-10-100-*	10	100	M 5	15	43	12	12	98
GN 425-10-120-*	10	120**	M 5	15	43	12	12	108
GN 425-10-180-*	10	180**	M 5	15	43	12	12	147
GN 425-10-200-*	10	200	M 5	15	43	12	12	160
GN 425-10-235-*	10	235**	M 5	15	43	12	12	183
GN 425-12-125-*	12	125	M 6	-	51	14	12	165
GN 425-12-160-*	12	160	M 6	-	51	14	12	196
GN 425-12-200-*	12	200	M 6	-	51	14	12	230
GN 425-12-250-*	12	250	M 6	-	51	14	12	274
GN 425-16-160-*	16	160	M 6	-	59	18	12	371
GN 425-16-200-*	16	200	M 6	-	59	18	12	430
GN 425-16-250-*	16	250	M 6	-	59	18	12	503
GN 425-16-300-*	16	300	M 6	-	59	18	12	581

\* Complete with colour index of the Cabinet "U" handles (SW, SR, RS or EL)

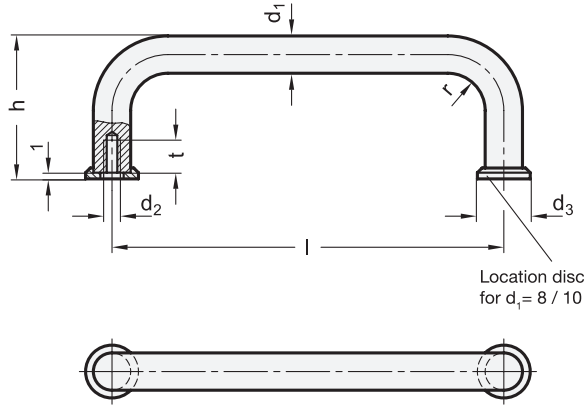
**SW** **SR** **RS** **EL**  
RAL 9005 RAL 9006 RAL 3000 anodized

## GN 425-AL

Description	d1	l ±0.5	d2	d3	h	r	t min.	⚖
GN 425-AL-8-55-*	8	55**	M 4	12	35	10	8	15
GN 425-AL-8-64-*	8	64	M 4	12	35	10	8	18
GN 425-AL-8-88-*	8	88**	M 4	12	35	10	8	20
GN 425-AL-8-96-*	8	96	M 4	12	35	10	8	22
GN 425-AL-8-100-*	8	100	M 4	12	35	10	8	24
GN 425-AL-8-120-*	8	120**	M 4	12	35	10	8	27
GN 425-AL-8-128-*	8	128	M 4	12	35	10	8	30
GN 425-AL-10-88-*	10	88**	M 5	15	43	12	12	34
GN 425-AL-10-100-*	10	100	M 5	15	43	12	12	37
GN 425-AL-10-120-*	10	120**	M 5	15	43	12	12	40
GN 425-AL-10-180-*	10	180**	M 5	15	43	12	12	60
GN 425-AL-10-200-*	10	200	M 5	15	43	12	12	80
GN 425-AL-10-235-*	10	235**	M 5	15	43	12	12	86
GN 425-AL-12-125-*	12	125	M 6	-	51	14	12	59
GN 425-AL-12-160-*	12	160	M 6	-	51	14	12	71
GN 425-AL-12-200-*	12	200	M 6	-	51	14	12	83
GN 425-AL-12-250-*	12	250	M 6	-	51	14	12	114
GN 425-AL-16-160-*	16	160	M 6	-	59	18	12	129
GN 425-AL-16-200-*	16	200	M 6	-	59	18	12	150
GN 425-AL-16-250-*	16	250	M 6	-	59	18	12	179
GN 425-AL-16-300-*	16	300	M 6	-	59	18	12	206

\*\* suitable for 19" rack and enclosure layout





\* Complete with material of the Cabinet "U" handles (GS or EP)

GS matt shot-blasted      EP electropolished

GN 425-NI

STAINLESS STEEL

Description	d1	Material	l ±0.5	d2	d3	h	r	t min.	ΔΔ
GN 425-NI-8-55-*	8	AISI 303	55**	M 4	12	35	10	8	39
GN 425-NI-8-64-*	8	AISI 303	64	M 4	12	35	10	8	43
GN 425-NI-8-88-*	8	AISI 303	88**	M 4	12	35	10	8	53
GN 425-NI-8-96-*	8	AISI 303	96	M 4	12	35	10	8	57
GN 425-NI-8-100-*	8	AISI 303	100	M 4	12	35	10	8	60
GN 425-NI-8-120-*	8	AISI 303	120**	M 4	12	35	10	8	66
GN 425-NI-8-128-*	8	AISI 303	128	M 4	12	35	10	8	70
GN 425-NI-10-88-*	10	AISI 303	88**	M 5	15	43	12	12	91
GN 425-NI-10-100-*	10	AISI 303	100	M 5	15	43	12	12	95
GN 425-NI-10-120-*	10	AISI 303	120**	M 5	15	43	12	12	100
GN 425-NI-10-180-*	10	AISI 303	180**	M 5	15	43	12	12	146
GN 425-NI-10-200-*	10	AISI 303	200	M 5	15	43	12	12	161
GN 425-NI-10-235-*	10	AISI 303	235**	M 5	15	43	12	12	181
GN 425-NI-12-125-*	12	AISI 304	125	M 6	-	51	14	12	169
GN 425-NI-12-160-*	12	AISI 304	160	M 6	-	51	14	12	200
GN 425-NI-12-200-*	12	AISI 304	200	M 6	-	51	14	12	236
GN 425-NI-12-250-*	12	AISI 304	250	M 6	-	51	14	12	283
GN 425-NI-16-160-*	16	AISI 304	160	M 6	-	59	18	12	373
GN 425-NI-16-200-*	16	AISI 304	200	M 6	-	59	18	12	437
GN 425-NI-16-250-*	16	AISI 304	250	M 6	-	59	18	12	521
GN 425-NI-16-300-*	16	AISI 304	300	M 6	-	59	18	12	600

GN 425-A4

STAINLESS STEEL

Description	d1	Material	l ±0.5	d2	d3	h	r	t min.	ΔΔ
GN 425-A4-10-88-GS	10	AISI 316L	88**	M 5	15	43	12	12	92
GN 425-A4-10-100-GS	10	AISI 316L	100	M 5	15	43	12	12	99
GN 425-A4-10-120-GS	10	AISI 316L	120**	M 5	15	43	12	12	111
GN 425-A4-10-180-GS	10	AISI 316L	180**	M 5	15	43	12	12	151
GN 425-A4-10-200-GS	10	AISI 316L	200	M 5	15	43	12	12	163
GN 425-A4-10-235-GS	10	AISI 316L	235**	M 5	15	43	12	12	185

\*\* suitable for 19" rack and enclosure layout

