

Semi-split shaft collars

Steel / Stainless Steel / Aluminium

SPECIFICATION

Version in Steel ST

Sintered Steel (Distaloy AB)
black oxidised with vapor

Socket head cap screw DIN 912
Steel, phosphated

Version in Stainless Steel

Sintered Steel AISI 316 LHC NI
Socket head cap screw DIN 912-A2

Turned version AISI 316 A4

weldable
Socket head cap screw DIN 912-A4

Version in Aluminium AL

- ground
- Socket head cap screw DIN 912-A2

INFORMATION

Semi-split shaft collars GN 706.2 can safely and simply be assembled i.e. with high clamping force without damaging the surface of the shaft.

For size $d_1 = 20$ to 36 d_3 is a through hole; starting from $d_1 = 42$ d_3 is a threaded blind bore.

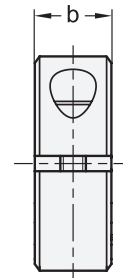
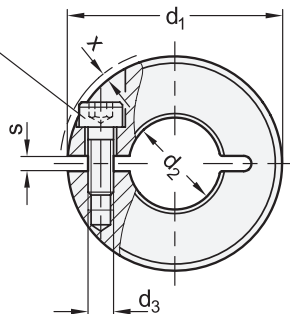
These shaft collars not only serve as an end stop, but they can also be used for fixing or triggering other components such as end limit switches.

TECHNICAL INFORMATION

- ISO-Fundamental tolerances (see page A21)
- Stainless Steel characteristics (see page A26)



Socket head cap screw
DIN 912





9

Machine elements

* Complete with material index of the Split shaft collars (AL, ST or NI)

AL ST NI
 Aluminum Steel Stainless Steel

GN 706.2

STAINLESS STEEL

Description	d1	d2 H10 Recommended shaft tolerance h11	b ±0.2	d3	s	x ≈ Max. protrusion of cap thread	⚖
GN 706.2-20-B6-*	20	B 6	9	M 3	2.1	1.2	18
GN 706.2-22-B8-*	22	B 8	9	M 3	2.1	1	20
GN 706.2-26-B10-*	26	B 10	11	M 4	2.1	1.6	32
GN 706.2-30-B12-*	30	B 12	11	M 4	2.1	0.7	40
GN 706.2-32-B14-*	32	B 14	11	M 4	2.1	0.7	41
GN 706.2-36-B15-*	36	B 15	13	M 5	2.1	1.4	68
GN 706.2-36-B16-*	36	B 16	13	M 5	2.1	1.4	70
GN 706.2-42-B18-*	42	B 18	15	M 5	3	0.6	103
GN 706.2-42-B20-*	42	B 20	15	M 5	3	0.6	109
GN 706.2-48-B22-*	48	B 22	15	M 5	3	0	126
GN 706.2-48-B25-*	48	B 25	15	M 5	3	0	139
GN 706.2-55-B28-*	55	B 28	15	M 6	3	0.5	163
GN 706.2-55-B30-*	55	B 30	15	M 6	3	0.5	171
GN 706.2-60-B32-*	60	B 32	15	M 6	4	0.4	178
GN 706.2-60-B35-*	60	B 35	15	M 6	4	0.4	190
GN 706.2-65-B40-*	65	B 40	15	M 6	4	0.5	196

Weight type AL

GN 706.2-A4

STAINLESS STEEL

Description	d1	d2 E8 Recommended shaft tolerance h11	b ±0.2	d3	s	x ≈ Max. protrusion of cap thread	⚖
GN 706.2-36-B16-A4	36	B 16	13	M 5	1.6	1.4	78
GN 706.2-42-B20-A4	42	B 20	15	M 5	1.6	0.6	119
GN 706.2-48-B25-A4	48	B 25	15	M 5	1.6	0	147
GN 706.2-55-B30-A4	55	B 30	15	M 6	1.6	0.5	185
GN 706.2-60-B35-A4	60	B 35	15	M 6	1.6	0.4	207