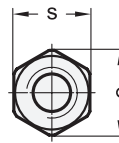
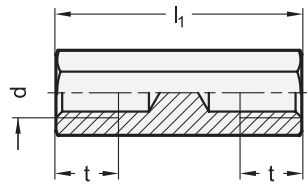
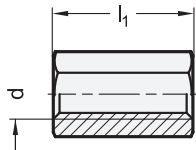


Type A

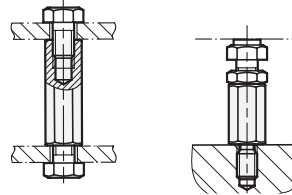
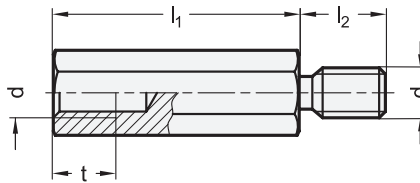
Through-hole thread

Threaded blind hole



Type B

Application example



**4 Type**

- A** Internal thread
- B** Internal thread and threaded stud

2 3

**Type A**

d	l <sub>1</sub> ±0,1												e ≈	s	t Min.		
	Through-hole thread					Threaded blind hole											
M 2,5	5	8	10	12	15	20	25	30	-	-	-	-	-	-	5,8	5	7
M 3	8	10	12	-	15	20	25	30	35	40	45	50	-	-	6,4	5,5	7
M 4	10	12	15	-	20	25	30	35	40	45	50	60	70	80	8	7	9
M 5	12	15	-	-	20	25	30	35	40	45	50	60	70	80	9,2	8	10
M 6	12	15	-	-	20*	25*	30	35	40	45	50	60	70	80	11,5	10	12
M 8	15	20	-	-	25**	30	35	40	45	50	60	70	80	-	15	13	14
M 10	25	30	-	-	35	40	45	50	60	70	80	100	-	-	19,5	17	16

\* t min. = 10, \*\* t min. = 12

2 3

**Type B**

d	l <sub>1</sub> ±0,1												e ≈	l <sub>2</sub>	s	t Min.	
	M 2,5	8*	10*	12	15	20	25	30	-	-	-	-					-
M 3	8	10	12	15	20	25	30	35	40	45	50	-	-	6,4	6	5,5	7
M 4	10*	12**	15	20	25	30	35	40	45	50	60	70	80	8	8	7	9
M 5	12**	15	20	25	30	35	40	45	50	60	70	80	-	9,2	8	8	10
M 6	15***	20	25	30	35	40	45	50	60	70	80	-	-	11,5	10	10	12
M 8	20	25	30	35	40	45	50	60	70	80	-	-	-	15	14	13	14
M 10	25	30	35	40	45	50	60	70	80	100	-	-	-	19,5	16	17	16

\* t min. = 5, \*\* t min. = 7, \*\*\* t min. = 10

**Specification**

- Steel **ST**  
Zinc plated, blue passivated
- Stainless steel AISI 303 **NI**  
Matte shot-blasted
- *Stainless Steel Characteristics* → Page 2166
- RoHS

1

**Information**

Spacers GN 6220 are commonly used as spacing rods. They allow parts to be fastened with an offset parallel to their mounting plane. Type A is also used as a connecting nut.

How to order

**GN6220-ST-M8-40-A**

- 1 Material
- 2 d
- 3 l<sub>1</sub>
- 4 Type

1 2 3 4

3.1

3.2

3.3

3.4

3.5

3.6

3.7

3.8

3.9

