

Flanged connector clamps

Aluminium / with 4 retaining bores

SPECIFICATION

Identification No.

No. **2**: with Stainless Steel-Clamping screw DIN 912

Aluminium

plastic coated

black, RAL 9005, textured finish **SW**

blank

matt shot-blasted **BL**

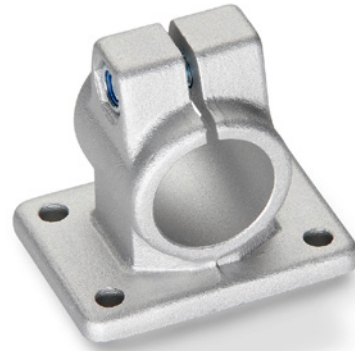
Clamping bores mechanically machined

Socket cap screw DIN 912

Stainless Steel AISI 304

Hexagon nuts DIN 985

Stainless Steel AISI 304



INFORMATION

The clamping bores of GN 146 flanged connector clamps are mechanically machined and designed for construction tubes GN 990 (see page 1902) or DIN 2391, DIN 2395 and DIN 2462 respectively.

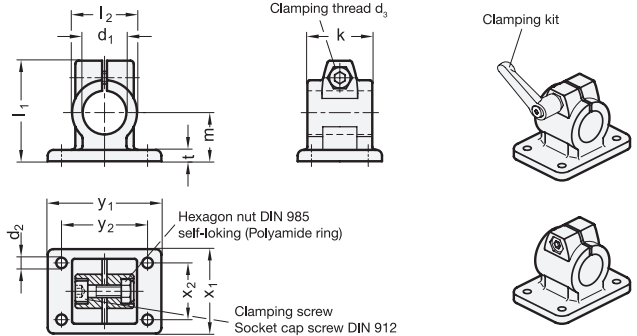
The standard version of the clamping screw is a socket cap screw with hexagonal socket DIN 912. It can be replaced by a clamping kit GN 911 (see page 1874) (article code see table of dimensions).

ACCESSORY

- Clamping kit GN 911 (see page 1874)

TECHNICAL INFORMATION

- Stainless Steel characteristics (see page A26)



* Complete with colour index of the Flanged connector clamps (SW or BL)

SW **BL**
RAL9005 blank

GN 146

Description	d1	k	d2	d3	l1	l2	m	t	x1	x2	y1	y2	Clamping kits for d3	⚖
GN 146-B20-40-2-*	B 20	40	6.5	M 8	62	40	30	7	52	35	70	53	GN 911-M8-32	194
GN 146-B25-40-2-*	B 25	40	6.5	M 8	62	40	30	7	52	35	70	53	GN 911-M8-32	179
GN 146-B30-40-2-*	B 30	40	6.5	M 8	62	40	30	7	52	35	70	53	GN 911-M8-32	160
GN 146-B30-56-2-*	B 30	56	8.5	M 10	83	56	42	10	78	52	108	82	GN 911-M10-40	510
GN 146-B32-56-2-*	B 32	56	8.5	M 10	83	56	42	10	78	52	108	82	GN 911-M10-40	476
GN 146-B35-56-2-*	B 35	56	8.5	M 10	83	56	42	10	78	52	108	82	GN 911-M10-40	480
GN 146-B40-56-2-*	B 40	56	8.5	M 10	83	56	42	10	78	52	108	82	GN 911-M10-40	435
GN 146-B40-65-2-*	B 40	65	11	M 10	95	65	50	14	92	62	128	98	GN 911-M10-55	790
GN 146-B42-65-2-*	B 42	65	11	M 10	95	65	50	14	92	62	128	98	GN 911-M10-55	760
GN 146-B45-65-2-*	B 45	65	11	M 10	95	65	50	14	92	62	128	98	GN 911-M10-55	736
GN 146-B48-65-2-*	B 48	65	11	M 10	95	65	50	14	92	62	128	98	GN 911-M10-55	694
GN 146-B50-65-2-*	B 50	65	11	M 10	95	65	50	14	92	62	128	98	GN 911-M10-55	680
GN 146-B50-80-2-*	B 50	80	11	M 10	112	80	60	14	110	74	154	118	GN 911-M10-55	1300
GN 146-B55-80-2-*	B 55	80	11	M 10	112	80	60	14	110	74	154	118	GN 911-M10-55	1220
GN 146-B60-80-2-*	B 60	80	11	M 10	112	80	60	14	110	74	154	118	GN 911-M10-55	1120

Weight BL